

1994
CUTLASS SUPREME
By Oldsmobile



C u t l a s s S u p r e m e

OUR EDGE. YOUR EDGE. *Three*



THE SAFETY FACTOR. *Five*



BALANCED PERFORMANCE. *Seven*



UNCOMPROMISED FUN. *Eleven*



INNER SPACE. *Twelve*



SPECIAL EDITIONS. *Fourteen*



SPECIFICATIONS. *Sixteen*



The 1994 Oldsmobile Cutlass Supreme is an exhilarating car that's stylish, roomy and smartly priced. Just what you might demand from your next car. There are five Cutlass Supreme models: the performance- and luxury-focused SL coupe and sedan; the uncompromised convertible; and the striking S coupe and sedan. Cutlass Supreme is a true driver's car. The fact it can carry your family, simply means everyone can enjoy it. But we don't believe building a great car like the Cutlass Supreme is enough. We believe you ought to get even more for your money. So we also offer value-priced Cutlass Supreme Special Editions equipped with our most popular options. And we support you with the Oldsmobile Edge—our comprehensive customer care program. The objective is simple: your complete satisfaction. We know you have a lot of choices when it comes to buying a car. We invite you to read on and see why we think you should consider Cutlass Supreme.



Cadillac Supreme SL in Bright White.

YOUR EDGE BENEFITS INCLUDE:

Guaranteed Satisfaction.

Not satisfied with your new Cutlass Supreme? Bring it back within 30 days or 1,500 miles, whichever comes first. You'll receive full credit toward the SmartLease or purchase of another new Oldsmobile.

Roadside Assistance.

24 hours a day, 365 days a year, during the warranty period, help at no charge is a toll-free phone call away through our network of over 15,000 emergency facilities nationwide.

Bumper-to-Bumper Warranty.

Every part of your new Cutlass Supreme is covered, except tires (they have their own warranty), for three years or 36,000 miles, whichever comes first, with no deductible.

Courtesy Transportation.

For same-day warranty service, we'll give you a one-way shuttle up to 10 miles. For overnight warranty service, we'll give you a loaner or reimburse you up to \$30 a day for transportation.



OUR EDGE. YOUR EDGE.

When you leave a dealership in your new car, you don't want to be forgotten. That won't happen at Oldsmobile. Terry Thomsen knows. Her unsolicited letter told us what happened when she drove to a golf outing in her Cutlass Supreme. "We got our clubs out of the trunk and placed our handbags in and I foolishly closed the trunk.

"Sure, I buy the car and then it's like... "Who are you?"

Terry Thomsen of Bloomfield, Connecticut, found Oldsmobile took the handicap out of a recent golf game. A key locked inside the trunk didn't keep her from teeing off.

I immediately realized my car keys were locked in. Fortunately Oldsmobile puts the roadside assistance 800 number on the window. I had everyone waiting to tee off. Your response was wonderful. Within 20 minutes a service truck was at my car with a new key. The man was courteous, attentive and alert in noticing my back tire was almost flat. He left and returned with an air compressor to inflate the tire. All in all, it took just enough time to practice our chips and putts. Thanks for taking care of your customers after the sale. I remain a satisfied Oldsmobile owner." Mrs. Thomsen's letter says it all. You're welcome. It's our pleasure.

Letter edited for length and clarity only. Complete letter on file.



Edge benefits, listed on page 2, are included with every Cutlass Supreme at no extra charge. For details, please see any of our 3,000 Oldsmobile dealers across the country, or call 1-800-442-OLD.S.

CUTLASS SUPREME
SAFETY FEATURES
INCLUDE:

- Driver-side air bag
- 4-wheel anti-lock disc brakes
- Automatic front safety belts
- Programmable power door locks
- PASS-Key vehicle security system
- Rear and side window defoggers



Cutlass Supreme SL in Platinum Metallic.



THE SAFETY FACTOR.



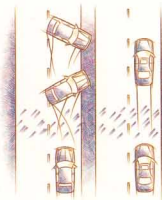
Every Cutlass Supreme has a standard driver-side air bag. Remember, always wear safety belts even with an air bag.

Okay, now let's talk about something no one wants to think about.



The available Head-Up Display projects speed, turn signal, headlamp and fuel level indicators onto the windshield. You stay informed while your eyes stay on the road.

Safety matters. At Oldsmobile, we want to help you avoid accidents in the first place. And help protect you...just in case. So every Cutlass Supreme has four-wheel anti-lock disc brakes, power rack-and-pinion steering, front-wheel drive, exceptional visibility, responsive engine power and more—what you need when reacting to



Cutlass Supreme's standard anti-lock brakes (ABS) help you maintain control by minimizing the chance of wheel lockup and skidding during hard braking.

unforeseen hazards. In the event of the unavoidable, Cutlass Supreme helps protect you and your passengers. A driver-side air bag is standard. The unibody structure forms a steel safety cage. Front and rear crush zones and side guard door beams help absorb and guide crash energy away from the passenger compartment. And the interior is designed to minimize injuries with its flame-retardant fabrics, rounded and padded surfaces and an energy-absorbing steering column. Safety is engineered into every Cutlass Supreme. Once you know it, you don't have to think about it.



Security also is a key part of safety. The remote control lock system turns on the interior lights and unlocks the car from up to 15 feet away.

CUTLASS SUPREME
PERFORMANCE
FEATURES INCLUDE:

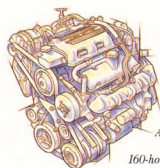
- Standard 3.1-liter SFI V6 engine or optional 3.4-liter DOHC V6
- Electronic 4-speed automatic transmission
- 4-wheel anti-lock disc brakes
- 4-wheel independent suspension
- Front bucket seats
- Floor console
- Rallye gauge cluster



Cutlass Supreme SL in Bright White.

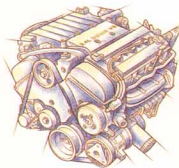


BALANCED PERFORMANCE.



*A new
160-horsepower,
3.1-liter V6, standard, offers
smooth, even performance.*

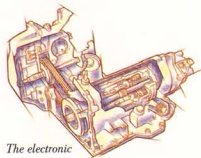
You keep calling it a "Driver's Car".. What's that all about?



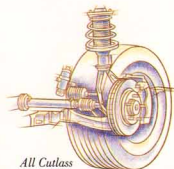
*The available 210-horsepower,
3.4-liter DOHC V6 engine is
part of a performance package
that includes special suspension
components, dual exhausts,
five-spoke aluminum wheels,
P225/60R16 tires, and rear-
deck aero wing on coupes.*

Cutlass Supreme presents performance in the grand sense: power when and where it's needed. This is a car bred to hug curves, devour straight-aways and pass when ordered, deftly and smoothly, without sweating. And to do it at lower cost than similarly talented imports. Every Cutlass Supreme sports the all-new 160-horsepower,

3.1-liter SFI V6 engine with an advanced ignition system. It's smooth and quiet. A strong, silent type. For even greater power, a 210-horsepower, 3.4-liter DOHC V6 is available. Its 24-valve performance means effortless high-rpm operation. The transmission is our computer-controlled four-speed automatic, with shifting so seamless, it's hardly detectable. Cutlass Supreme owes its flat cornering and controlled ride to four-wheel independent tuned suspension. Stopping is provided courtesy of four-wheel anti-lock disc brakes. If balanced performance is your preference, there's no need to look across an ocean. Just look across your Oldsmobile dealer's showroom.



*The electronic
four-speed automatic transmis-
sion is standard. It provides
precise, smooth shifting.*



*All Cutlass
Supreme models feature four-
wheel independent suspension
with MacPherson front
struts and four-wheel anti-
lock disc brakes.*



UNCOMPROMISED FUN.



A tinted glass back window with defogger is standard.

So I really like this car, but what do I have to give up for it?



The standard power side window's "auto-down" feature can lower all four at once.

With a mere touch, the power top quickly drops to welcome the sun—or goes up to seal out the elements.



A Cutlass Supreme convertible asks you to give up nothing but your inhibitions. In return, you get a very satisfying bit of open-air driving enjoyment. It's the only mid-size convertible available today. So, unlike some other convertibles, Supreme's interior is comfortable and spacious—unlimited headroom on nice days—with real room



The Cutlass Supreme convertible seats five passengers (available four-passenger buckets shown). All seats are contoured and covered with leather trim in the seating areas. There's even a driver-side six-way power seat.

for five. Put the power top up; comfort's still the word. The full headliner, tinted glass back window with defogger and power side windows, standard, keep out drafts and minimize road and wind noise. Air conditioning is also standard. Performance? You know we wouldn't skimp here. The 3.1-liter V6 engine and electronic four-speed automatic transmission are standard. After all, you've got to move with the wind. We've also added key sporting touches. Like foglamps, 16" aluminum wheels and aero rocker moldings. You're an adult. You're allowed to have fun. This is a great way to do it.



No need to sacrifice trunk space to enjoy this convertible. The trunk has more than 12 cubic feet of room to hold your fun.



CUTLASS SUPREME
CONVERTIBLE FEATURES
INCLUDE:

- 3.1-liter SFI V6 engine or optional 3.4-liter DOHC V6
- Electronic 4-speed automatic transmission
- Power folding top
- Glass rear window with defogger
- Reclining front bucket seats
- Full-width floor seat
- Leather trim in seating areas
- Power windows
- Cruise control

Cutlass Supreme Convertible in Bright Red.



INNER SPACE.

A true driver's car provides a comfortable interior. So we've designed a cabin that lets you and your passengers take comfort for granted. Both the standard contoured front sport bucket seats and available bench seats recline. And all controls are laid out for your easy view and reach. The compartment is quiet.

Road and wind noise are minimized so you can fully enjoy the clarity of the Delco AM/FM stereo. Tilt-Wheel steering is standard. So is the air conditioning system. The details—like power door locks, side and rear window defoggers, pulse wipers

and generous lighting and storage—have also been conveniently addressed. Cruise control, power windows and steering wheel touch controls for the air conditioning and sound systems are just a few of the available features you can designate. Go on. Enjoy the ride.



Available audio systems feature a compact disc or cassette player, and a six-speaker Dimensional Sound system. We think it all sounds great.



The available electric power Astrorof offers a breath of fresh air. The gray-tinted glass reduces glare.



The available split-folding rear seat allows easy trunk access through the passenger compartment and increases capacity for extra-long items.



CUTLASS SUPREME INTERIOR FEATURES INCLUDE:

- Drivers-side air bag
- Rallye gauge cluster
- TILT-WHEEL steering
- Air conditioning
- AM/FM stereo
- Reclining front bucket seats
- Floor console
- Programmable power door locks

Cutlass Supreme SL interior with seating areas trimmed in available Graphite leather.

The passive restraint front safety belt system is shown unfastened for photographic purposes. The system should remain fastened at all times for optimum safety.



SPECIAL EDITIONS

Buying a car should be an enjoyable experience. But comparing models, options and costs of various combinations can drive you crazy. So we have a way to make your shopping experience simpler.

We've taken popular Oldsmobile models and equipped them with the features you've told us you want. Then we gave them a special price to give you the best value possible. We call these our Special Editions. To get all the details, just see your dealer. Keep in mind, you could easily pay more and get less.

Or you could get a Cutlass Supreme Special Edition and a great value. It's your money, but the choice should be clear.



The well-lit, easy-to-read rally instrument cluster houses the speedometer, tachometer, voltmeter, and fuel, temperature and oil pressure gauges.



CUTLASS SUPREME SPECIAL EDITION SHOWN INCLUDES:

- Drivers' air bag
- 4-wheel anti-lock disc brakes
- 3.1-liter SFI V6 engine
- Electronic 4-speed automatic transmission
- Sport luxury package
- Cruise control
- Power windows
- Power mirrors
- AM/FM stereo with cassette

Cutlass Supreme Model
Standard and Optional Features

	S	SL	Conv.
Driver-side air bag	S	S	S
Anti-lock brakes	S	S	S
Air conditioning	S	S	S
Front reclining bucket seats	S	S	S
Floor console with shifter and storage	S	S	S
Automatic programmable power door locks	S	S	S
PASS-Key vehicle security system	S	S	S
Automatic front lap-and-shoulder safety belts	S	S	S
Rear lap safety belt, center position where applicable	S	S	S
Roll-over gauge cluster	S	S	S
Engine oil level monitor	S	S	S
Wet-arm pulse wipers	S	S	S
Rear window defogger	S	S	S
Side window defoggers	S	S	S
TILT-WHEEL adjustable steering column	S	S	S
2-sided galvanized steel body panels (except roof)	S	S	S
Base-coat/clear-coat paint	S	S	S
Stainless steel exhaust system	S	S	S
Illuminated entry package	S	S	S
Inside day/night mirror with dual reading lamps	S	S	S
Soft-Ray tinted windows	S	S	S
Flo-thru ventilation	S	S	S
All-season radial BSW touring tires	S	S	S
16" aluminum wheels	S	S	S
15" wheels with bolt-on discs	S	S	S
15" aluminum wheels	O		
Special front and rear fascias and aero rocker moldings	S	S	
Fog lamps	S	S	
Leather-wrapped steering wheel	O	S	
Power windows	O	O	S
Dual outside mirrors (driver-side remote)	S		
Dual outside power mirrors	S	S	
Cruise control	O	S	
Carpeted floor mats	O	S	
Leather seating areas	O	S	
Driver-side power seat	O	S	
Power trunk release	O	S	
Split-folding rear seat backs	O	S	
Engine block heater	O	O	
Head-up instrument display	O	O	
55/45 divided bench front seat	O	O	
Rear bucket seats with console	O	O	



Cutlass Supreme S Coupe



Cutlass Supreme S Sedan



Cutlass Supreme SL Coupe



Cutlass Supreme SL Sedan



Cutlass Supreme Convertible

Wheels



16" aluminum wheel. Included with 3.4-liter engine package.



16" aluminum wheel. Standard on SL and Convertible.



15" aluminum wheel. Optional on Cutlass Supreme S.



15" bolt-on wheel disc. Standard on Cutlass Supreme S.

Cutlass Supreme Model
Standard and Optional Features (continued)

	S	SL	Conv.
Astrorooft	O	O	
Deck-lid luggage carrier	O	O	
Body side moldings	O	O	O
Trunk cargo net	O	O	O

Audio Systems

	S	SL	Conv.
AM/FM stereo	S	S	
AM/FM stereo with cassette	O	O	S
AM/FM stereo with cassette and graphic equalizer	O	O	O
AM/FM stereo with compact disc player	O	O	O
Extended range speaker system	S	S	S
6-speaker Dimensional Sound system	O	O	

Engineering Features

	S	SL	Conv.
4-wheel power disc brakes	S	S	S
4-wheel independent suspension	S	S	S
Touring suspension components	S		
Power rack-and-pinion power steering	S	S	S
3.1-liter SFI V6 engine with 4-speed automatic transmission	S	S	S
3.4-liter DOHC V6 engine with 4-speed automatic transmission	O	O	O

Engine Specifications

	3.4-Liter V6	3.1-Liter SFI V6
Displacement	3.4 liter (207 cu. in.)	3.1 liter (191 cu. in.)
Engine type	DOHC V6	V6
Horsepower	210 @ 5200	160 @ 5200
Torque	215 @ 4000	185 @ 4000
Compression ratio	9.25:1	9.5:1
Fuel management	Sequential port	Sequential port

Dimensions

	Coupe	Sedan
Wheelbase (in.)	107.5	107.5
Track, front/rear (in.)	59.5/58.0	59.5/58.0
Tire size (std.) ¹	P205/70R15	P205/70R15
Wheel size (std.)	15 x 6	15 x 6
Brake type, front/rear	Disc/Disc	Disc/Disc
Fuel tank (galls.)	16.5	16.5
Length (in.)	193.9	193.7
Width (in.)	71.0	71.0
Height (in.)	53.3	54.8
Weight, curb (lbs.)	3243	3354

Dimensions (continued)	Coupe	Sedan
Headroom, front/rear (in.)	37.8/37.1	38.8/38.4
Legroom, front/rear (in.)	42.3/34.8	42.4/36.2
Shoulder room, front/rear (in.)	57.6/57.2	57.4/56.6
Seating capacity	5 ²	5 ¹
Trunk capacity (cu. ft.)	15.5	15.5
Trunk turning diameter, curb to curb (ft.)	36.7	36.7

Note: Dimensions apply to Cutlass Supreme S. Other models may vary.

Option Packages

For ordering convenience, select one of the packages shown below.

	S	SL	Convertible
Carpeted floor mats	•	•	•
Dual outside power mirrors	•	•	•
AM/FM stereo with cassette	•	•	•
6-speaker Dimensional Sound system	•	•	•
Power windows	•	•	•
Remote control locks	•	•	•
Power antenna	•	•	•
Lighted visor vanity mirrors	•	•	•
Automatic air conditioning	•	•	•
Power driver's seat	•	•	•
Split-folding rear seat backs	•	•	•
Steering wheel touch controls	•	•	•

S = Standard O = Optional
*The chains may cause vehicle damage when used with P215/60R16 and P235/60R16 tires. ¹16 with optional divided bench seat.

Exterior Colors



1. Available on SL coupe.
2. Available on SL sedan.
3. Available on Convertible.
All colors are available on Cutlass Supreme S. Colors 14, 30, 33, 91 Medium Beige, Adriatic Blue, Ruby Red. Not all interior colors are available in combination with all exterior colors. See your dealer for compatibility.

When you buy a Cutlass Supreme, you'll start to realize Oldsmobile isn't just another car company. Our philosophy is different. We know you expect a high-quality car, and there are a lot out there to choose from. But we firmly believe the way we treat you is just as important as the car you buy. In fact, we know our business depends on that. One expression of our conviction is the Oldsmobile Edge. We not only back our cars, we also back you. We know that sometimes things can go wrong. And it isn't right for you, your family, the people who depend on you, to be inconvenienced. So we support you 24 hours a day every day, at no extra charge, and help with your questions, roadside emergencies, warranty service and even things beyond our control. Like running out of gas or locking your keys in the car. All it takes is a toll-free call to 1-800-442-OLDS. Buying a car should be the start of your relationship with a car company, not the end. You have a right to expect more. At Oldsmobile, we're delivering it.



FOR OCCUPANT PROTECTION:

- Supplemental Inflatable Restraint: automatic lap/shoulder belts, driver/front passenger and driver air bag
- Manual lap safety belt, center seat position
- Manual lap/shoulder safety belts, outboard rear positions
- Energy-absorbing steering column
- Energy-absorbing instrument panel
- Laminated windshield glass, urethane bonded
- Tempered safety glass, side and rear windows
- Interlocking door latches
- Side-guard door beams
- Passenger-guard inside door lock handles
- Folding front seat back locks, inertia type/manual, two-door models
- Safety armrests
- Head restraints, front adjustable
- Dual sun visors
- Break-away inside rearview mirror
- Security door locks and door retention components
- Automatic door locking system
- Front and rear crush zones
- Pressure lock radiator cap

FOR ACCIDENT AVOIDANCE:

- Side marker lamps and reflectors
- Parking lamps
- Four-way hazard warning flashers
- Back-up lamps
- Directional signal control
- Windshield defroster, washer and multi-speed wipers
- Inside day/night rearview mirror
- Outside rearview mirrors
- Brake system with dual master cylinder plus warning light
- Center high-mounted stop lamp
- Anti-lock brakes
- Starter safety switch
- Dual-action hood latch (front opening)
- Low-glare finish (inside windshield

moldings, wiper arms and blades)

- Safety road wheel rims
- Tires with built-in tread wear indicators
- Illuminated heater and defroster controls
- Pressure relief fuel cap
- Audible disc brake lining wear indicators
- Electric rear window defogger

FOR THEFT DETERRENCE:

- Theft-deterrent steering column lock
- Remote inside hood release
- Visible vehicle identification number
- Laser-etched VIN plate
- PASS-Key vehicle security system
- Marked body parts (where applicable)

IMPORTANT WORDS ABOUT THIS CATALOG:

We have tried to make this catalog as comprehensive and factual as possible. We reserve the right, however, to make changes at any time, without notice, in prices, colors, materials, equipment, specifications, models and availability. Since some information may have been updated since the time of printing, please check with your Oldsmobile dealer for complete details.

• A WORD ABOUT ENGINES:

Oldsmobiles are equipped with engines produced by different operating units of General Motors, its subsidiaries or suppliers to GM worldwide.

• A WORD ABOUT ASSEMBLY: Oldsmobiles are assembled by different operating units of General Motors, its subsidiaries or suppliers to GM worldwide. Oldsmobiles incorporate

thousands of components produced by different operating units of GM, its subsidiaries or suppliers to GM worldwide. We sometimes find it necessary to produce Oldsmobiles with different or differently sourced components than originally

scheduled. All such components have been approved for use in Oldsmobiles and will provide the quality performance associated with the Oldsmobile name. Since some options may be unavailable when your vehicle is assembled, we suggest that you verify that your vehicle includes the equipment you ordered or, if there are changes, that they are acceptable to you.

• A WORD ABOUT UPDATED SERVICE INFORMATION: Oldsmobile regularly sends its dealers useful service bulletins about Oldsmobile products. Oldsmobile monitors product performance in the field. We then prepare bulletins for servicing our products better. Now you can get these bulletins, too. Ask your dealer. To get ordering information, call toll-free 1-800-551-4123.

• A WORD ABOUT CORROSION PROTECTION:

Oldsmobiles are designed and built to resist corrosion. All body sheet metal components are warranted against rust-through from corrosion for six years/100,000 miles. There is also no deductible for rust-through repairs. Application of additional rust-inhibiting materials is not required under the corrosion coverage.

• A WORD ABOUT WARRANTY:

The GM 3-year/36,000-mile Bumper-to-Bumper Warranty covers repairs for any new Oldsmobile, including labor and parts, to correct any defects in material or workmanship occurring during the warranty period. The complete vehicle (except tires, which are covered by their manufacturer) will be covered for three years or 36,000 miles, whichever comes first, with no deductible charges. See your Oldsmobile dealer for terms of these limited warranties.

The 1994 Oldsmobile lineup

offers a wide choice of models for every driving need. There's something in it for everyone.



ACHIVA



CUTLASS CIERA



CUTLASS SUPREME



EIGHTY EIGHT



EIGHTY EIGHT LS5



NINETY EIGHT



CUTLASS CRUISER



SILHOUETTE



BRAVADA

© 1993 GM Corp. All Rights Reserved. Printed in USA 8/93
Cutlass Supreme, Delco, GMAC, Oldsmobile, SmartBuy, SmartLease, Soft-Roy, the Oldsmobile Edge emblem and the Oldsmobile Rocket emblem are registered trademarks of General Motors Corp. TILT-WHEEL is a trademark of General Motors Corp. The Oldsmobile Edge and the GM Card are service marks of General Motors Corp.



CUTLASS SUPREME
By Oldsmobile